

# EcoLinks 2015

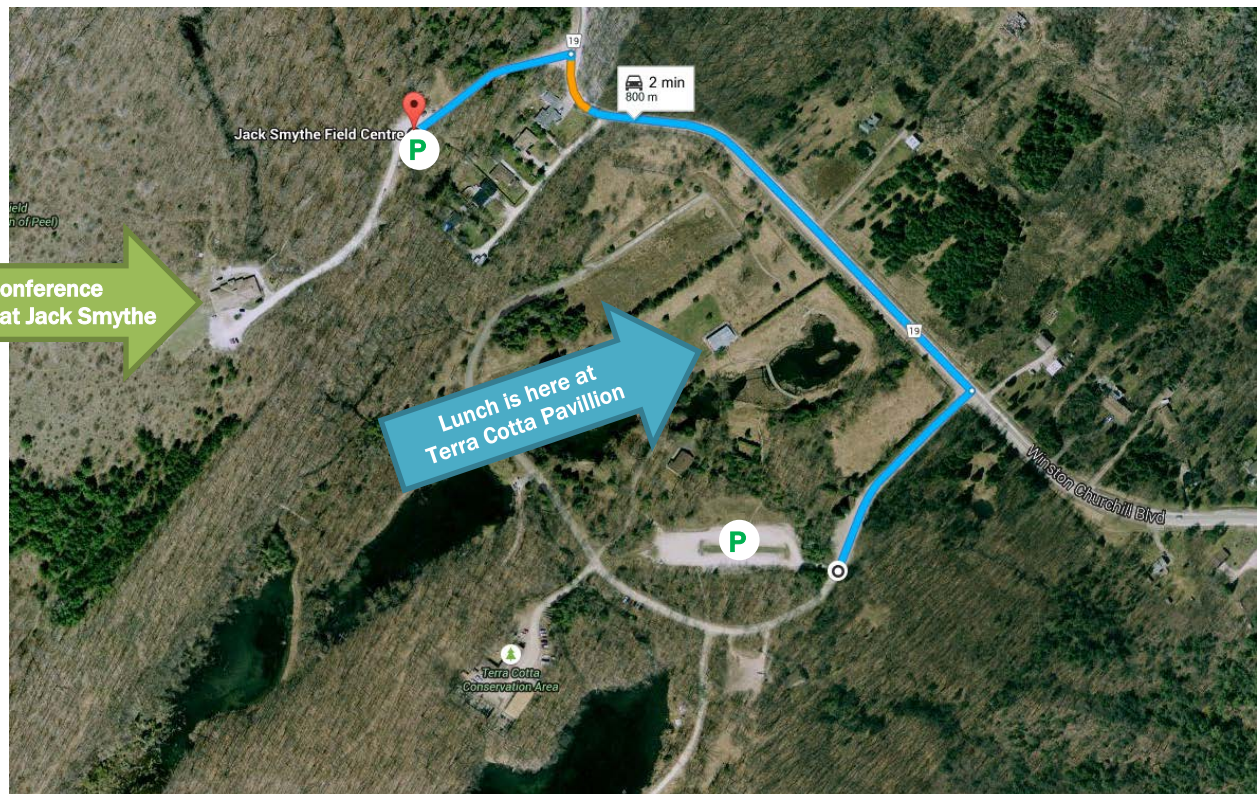
## DIRECTIONS

Ecolinks 2015 takes place at Jack Smythe Field Centre (see green arrow) and Terra Cotta Conservation Area.

Please arrive for 9 AM and park as directed at Jack Smythe Field Centre. The workshops and exhibitors hall will take place at Jack Smythe Field Centre.

At 11:40, please join the guided hike at the main entrance of Jack Smythe. We will hike through the forest to Terra Cotta Conservation Area. Lunch will be served at the Pavillion at Terra Cotta Conservation Area (see blue arrow).

If you are not able to join the guided hike, please follow the blue route indicated below to drive, and park in the main parking lot at Terra Cotta Conservation Area.



**Jack Smythe Field Centre**  
is located at  
14592 Winston Churchill Blvd.  
Terra Cotta  
<https://goo.gl/maps/wRQQv>

**Terra Cotta Conservation Area**  
is located at  
14452 Winston Churchill Blvd  
Terra Cotta  
<https://goo.gl/maps/1aP8E>

**Questions?**  
Call Katya Seckar,  
OSEE Vice President,  
at 416-845-8683

